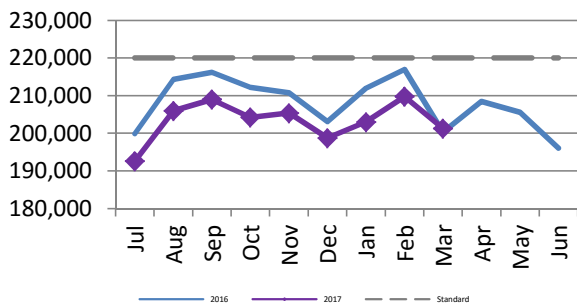


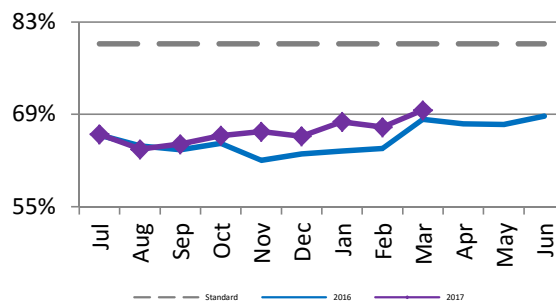
Oahu Transit Services - Fixed Route
 Monthly Performance Report
 For the Month Ending March 2017

Key Performance Indicators (KPI)	March 2017	March 2016	Percent Change	9 Months FY2017	9 Months FY2016	Percent Change	Goals
Total Monthly Ridership	5,580,389	5,550,824	0.53%	48,832,128	50,569,449	-3.44%	
Average Weekday Ridership	201,288	200,319	0.48%	203,322	209,535	-2.97%	220,000
Percent of Trips On Time	69.8%	68.4%	1.4%	66.41%	64.41%	2.00%	80%
Bus Availability	87.8%	90.1%	-2.3%	88.1%	89.6%	-1.53%	90%
Bus Miles/Major Collisions	945,988	109,194	766.34%	254,174	147,557	72.26%	200,000
Preventable Accidents/Million Miles (rolling 12 Mos)				2.13	3.88	-45.10%	3.00
Bus Miles/Mechanical Road Calls	9,555	8,214	16.34%	9,268	11,441	-18.99%	10,000
Spare Ratio	23.85%	18.71%	5.14%	21.66%	17.88%	3.78%	>20%
Percent of Inspections Completed On Time	100.00%	100.00%	0.00%	100.00%	100.00%	0.00%	98%
Percent Maintained Pullouts	98.91%	99.52%	-0.61%	99.40%	99.48%	-0.08%	100%
Cost per Hour	\$121.19	\$126.10	-3.89%	\$123.18	\$122.03	0.94%	\$120
Cost per Trip	\$2.94	\$3.01	-2.35%	\$2.93	\$2.79	5.01%	\$2.50
Cost per Mile	\$8.67	\$9.00	-3.68%	\$8.81	\$8.71	1.17%	
Farebox Recovery	27.70%	25.40%	2.30%	27.23%	28.80%	-1.57%	30%
Trips per Hour	41.23	41.89	-1.58%	42.10	43.80	-3.89%	48
Trips per Mile	2.95	2.99	-1.36%	3.01	3.13	-3.68%	
Passenger Miles per Revenue Hour	220.75	230.92	-4.40%	225.59	236.37	-4.56%	250
Average System Speed	12.93	12.96	-0.24%	12.88	12.94	-0.40%	
Percent Complete in 30 Days (Customer)	99.87%	95.93%	3.9%	98.43%	97.29%	1.1%	
Complaint Rate (Complaints per 100,000 trips)	9.64	10.77	-10.51%	10.02	11.25	-10.97%	10

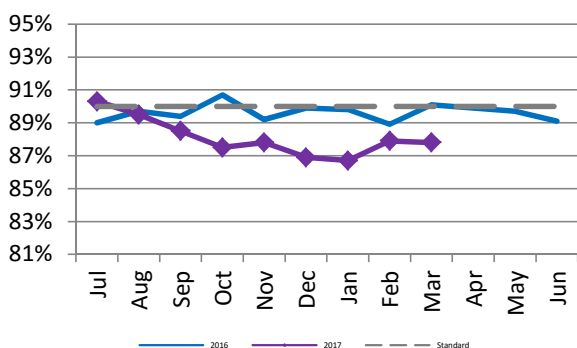
TheBUS
 Average Weekday Ridership



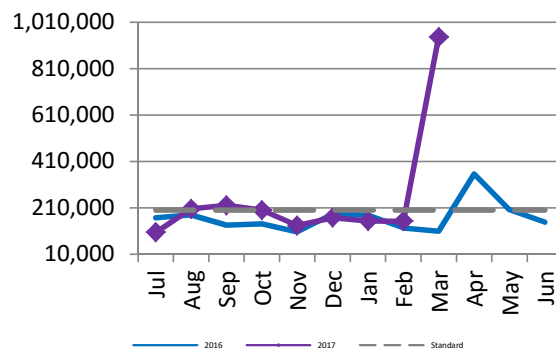
TheBUS
 Percent of Trips On Time



TheBUS
 Bus Availability



TheBUS
 Bus Miles/Major Collisions



**Oahu Transit Services - Fixed Route
Monthly Performance Report
For the Month Ending March 2017**

